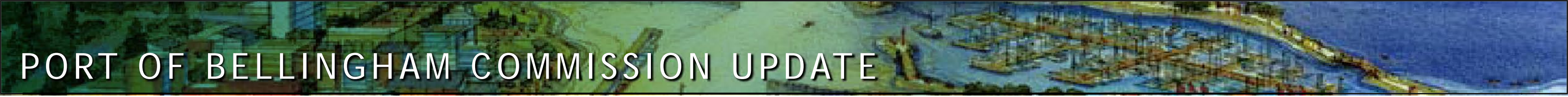


PORT OF BELLINGHAM COMMISSION UPDATE
May 7, 2008



THE waterfront DISTRICT
BELLINGHAM WASHINGTON



PORT OF BELLINGHAM COMMISSION UPDATE

DISCUSSION TOPICS FOR TODAY'S MEETING

Topic 1
Roads and Infrastructure

Topic 2
Development Phasing

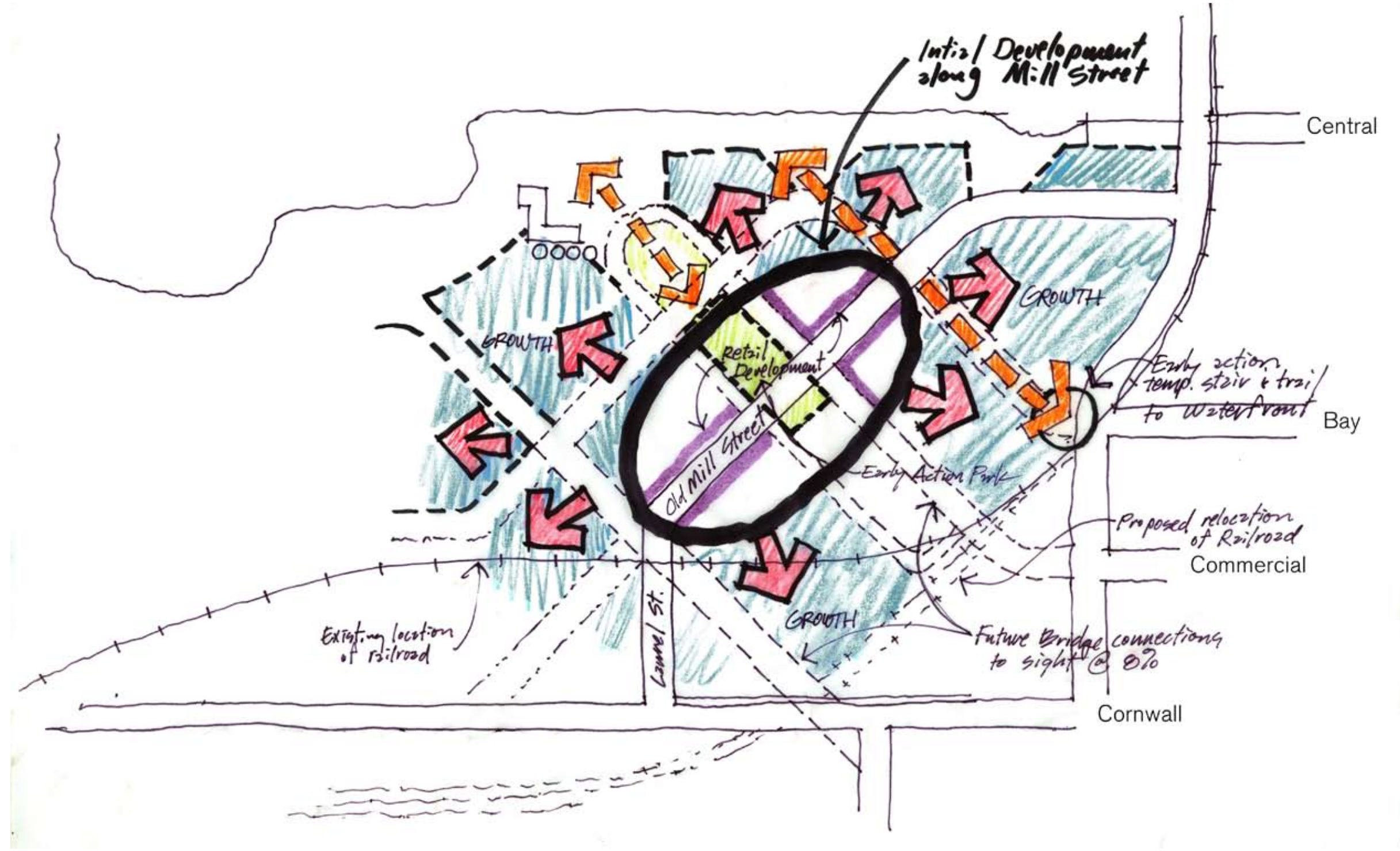
Topic 3
Sustainable Strategies

Topic 4
Convergence of Big Ideas



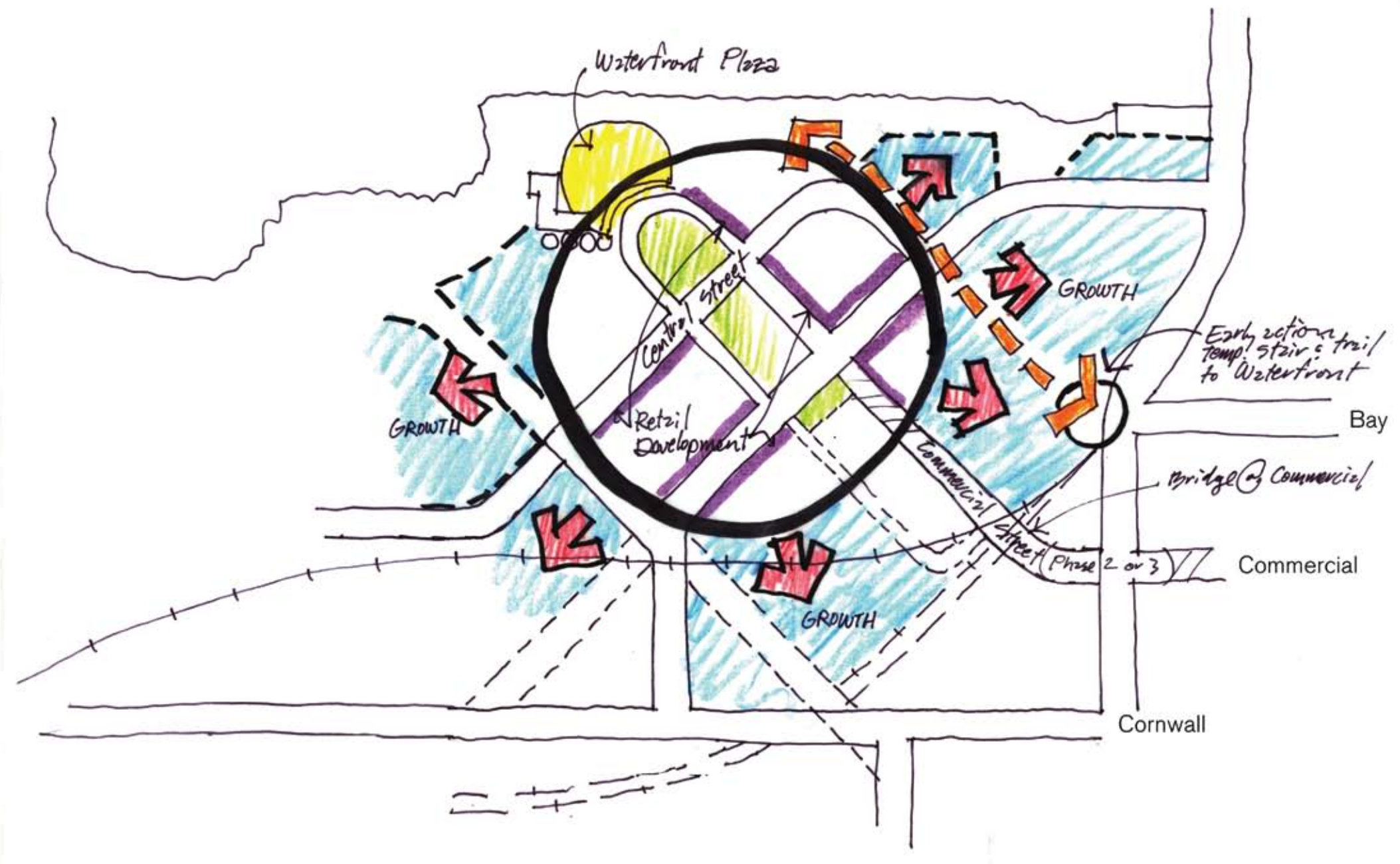
PORT OF BELLINGHAM COMMISSION UPDATE

DEVELOPMENT PHASE 1



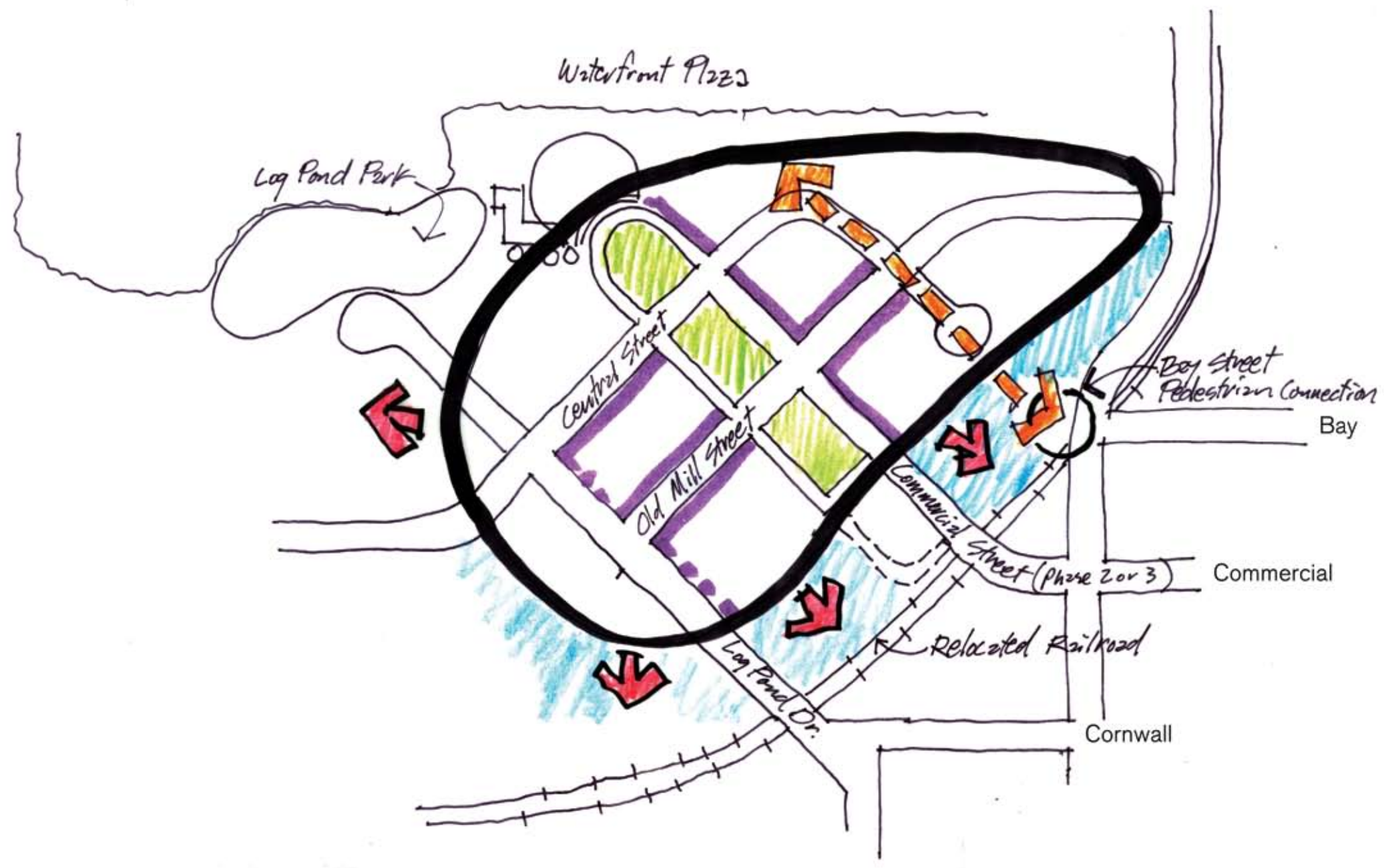
PORT OF BELLINGHAM COMMISSION UPDATE

DEVELOPMENT PHASE 2



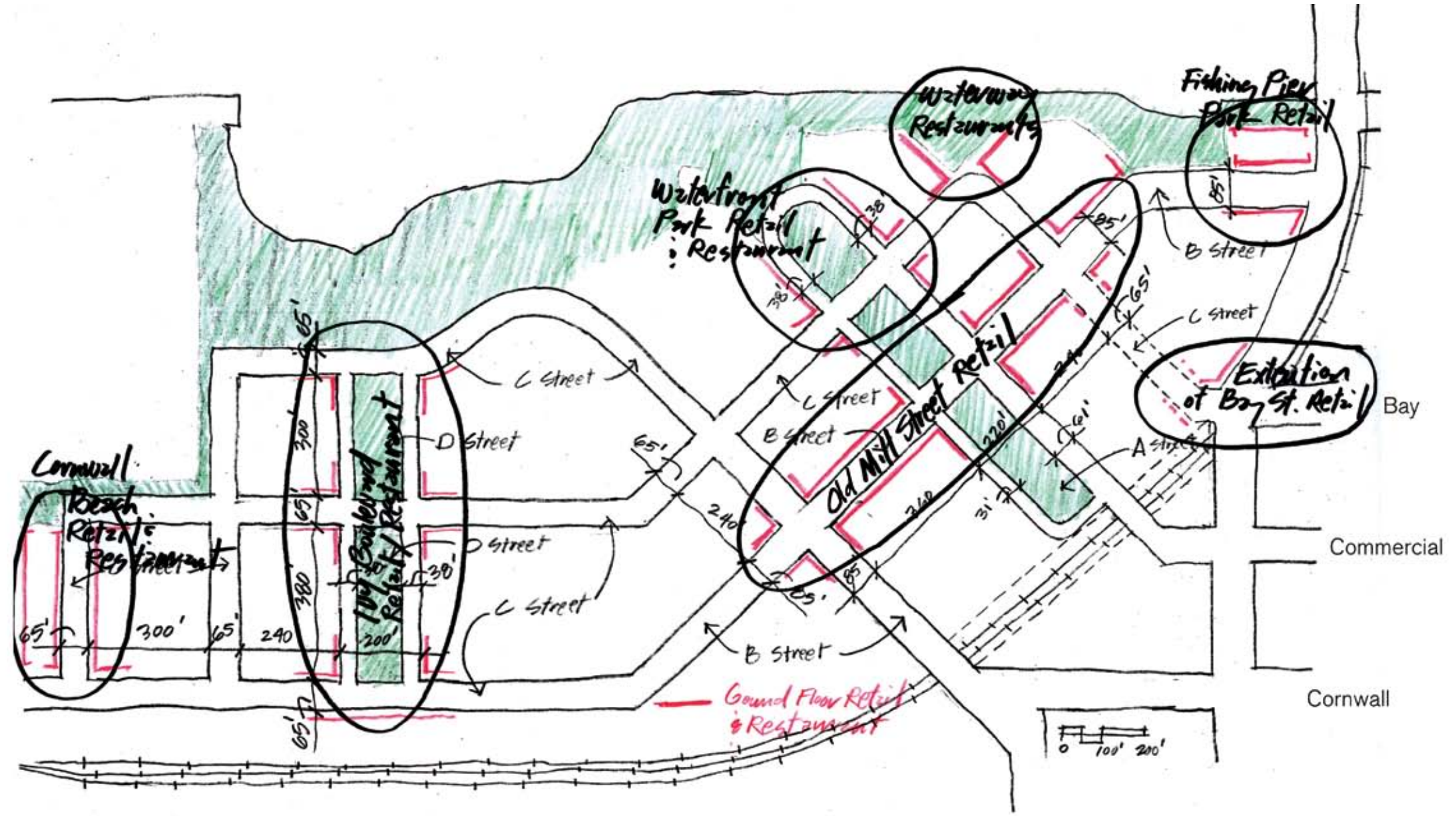
PORT OF BELLINGHAM COMMISSION UPDATE

DEVELOPMENT PHASE 3

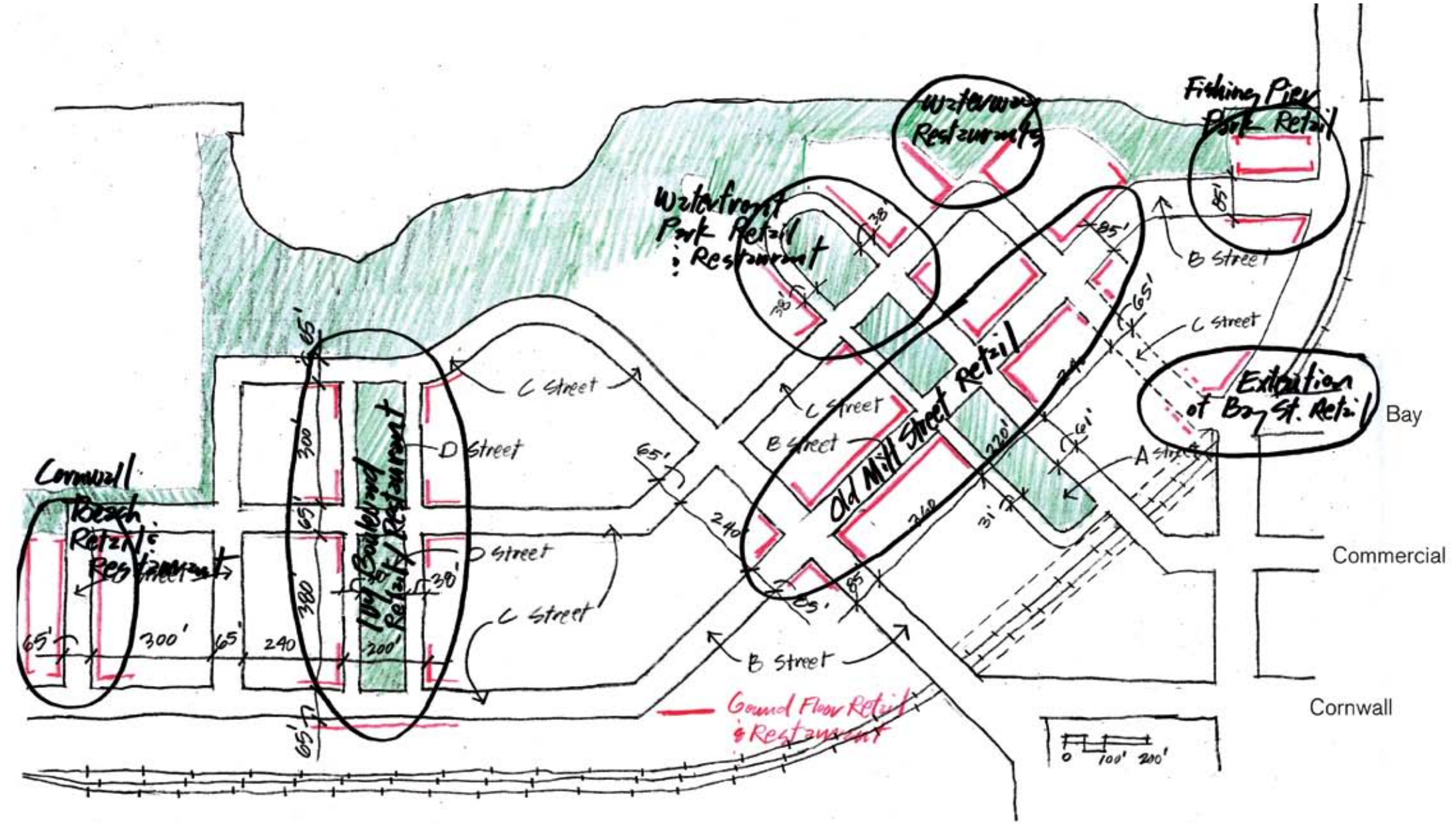


PORT OF BELLINGHAM COMMISSION UPDATE

PEDESTRIAN STREET TYPES & ON-STREET PARKING

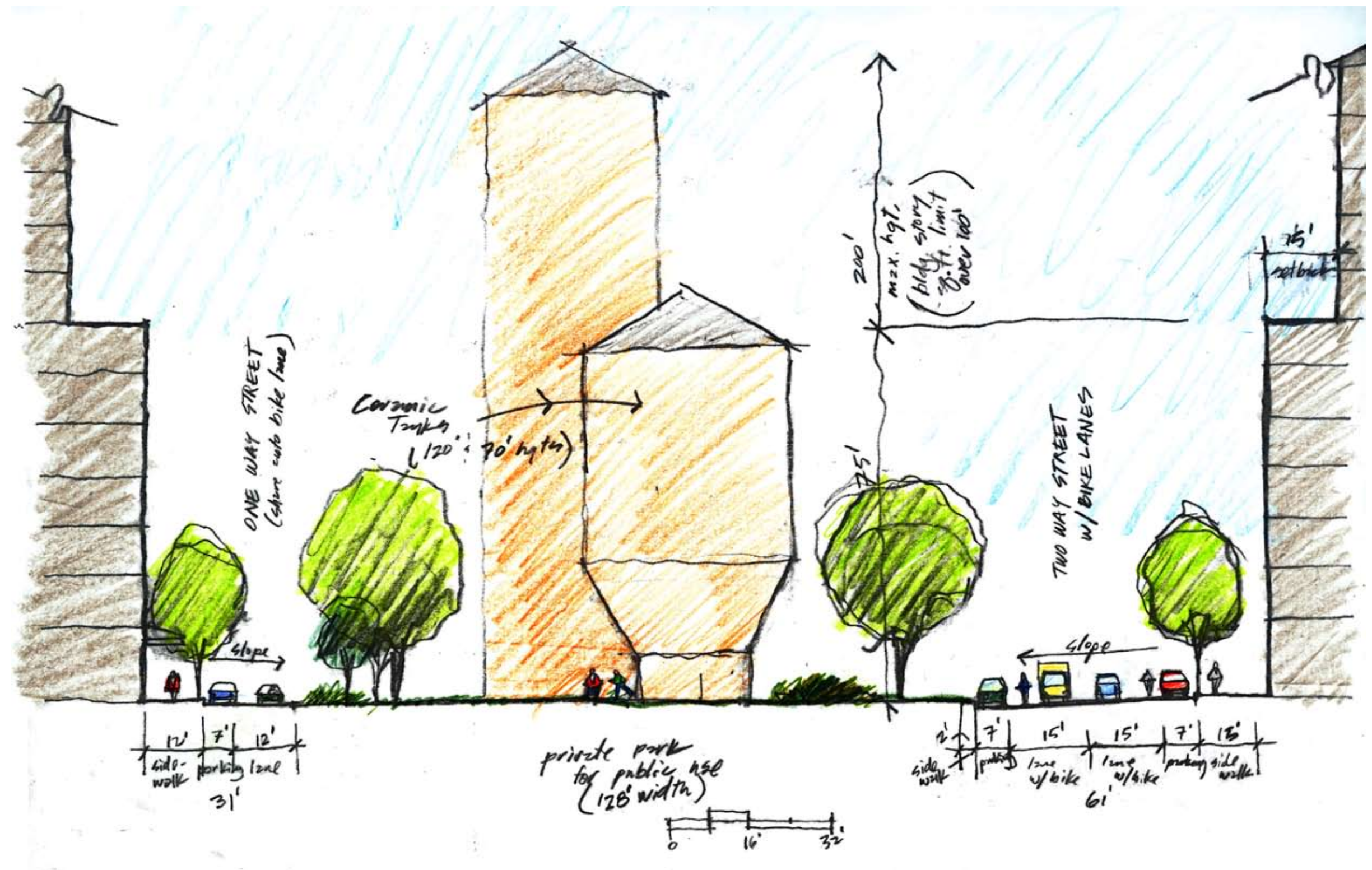


PEDESTRIAN STREET TYPES

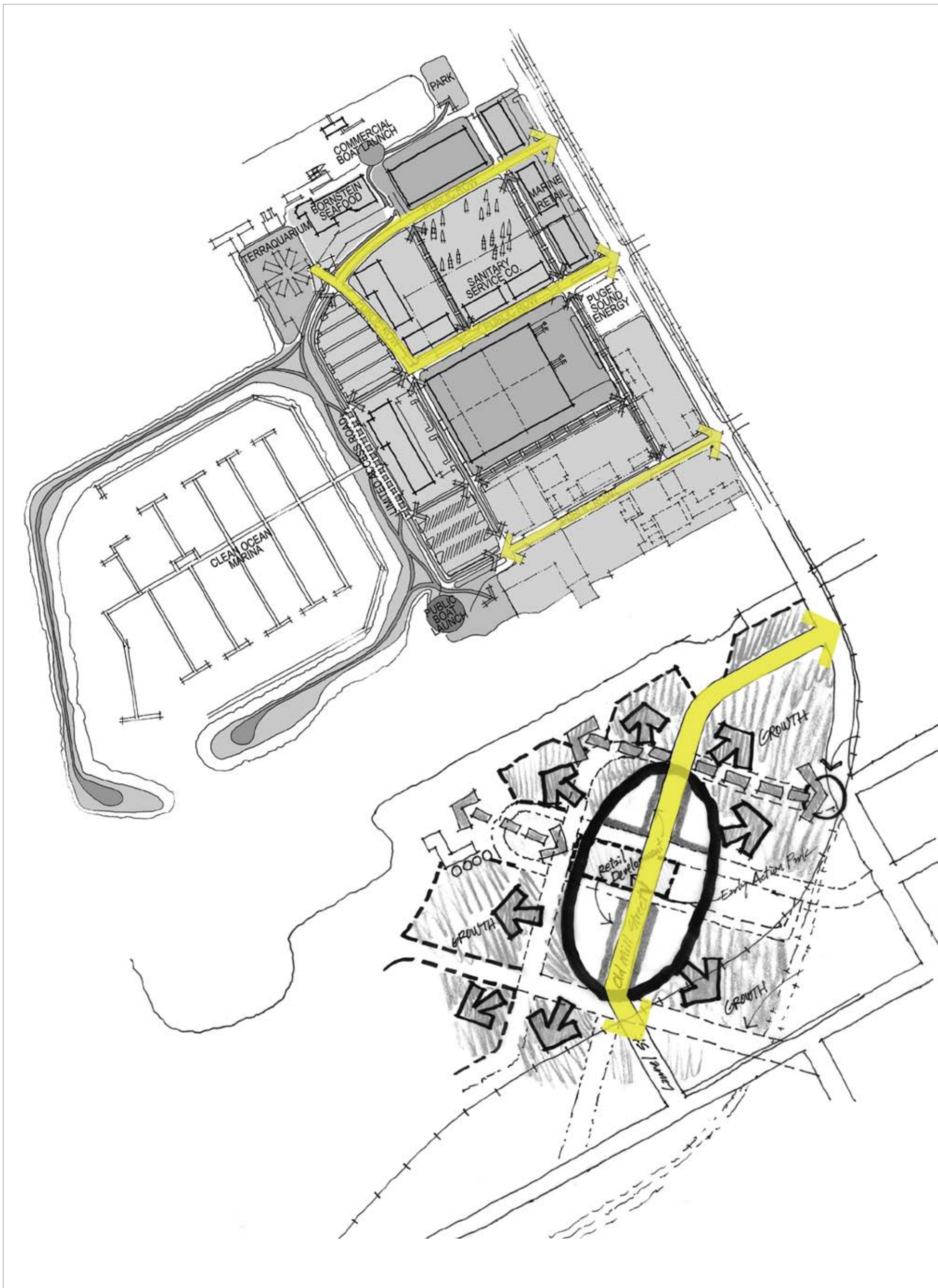


PORT OF BELLINGHAM COMMISSION UPDATE

COMMERCIAL STREET GREEN (TYPE 'A' PEDESTRIAN STREET)

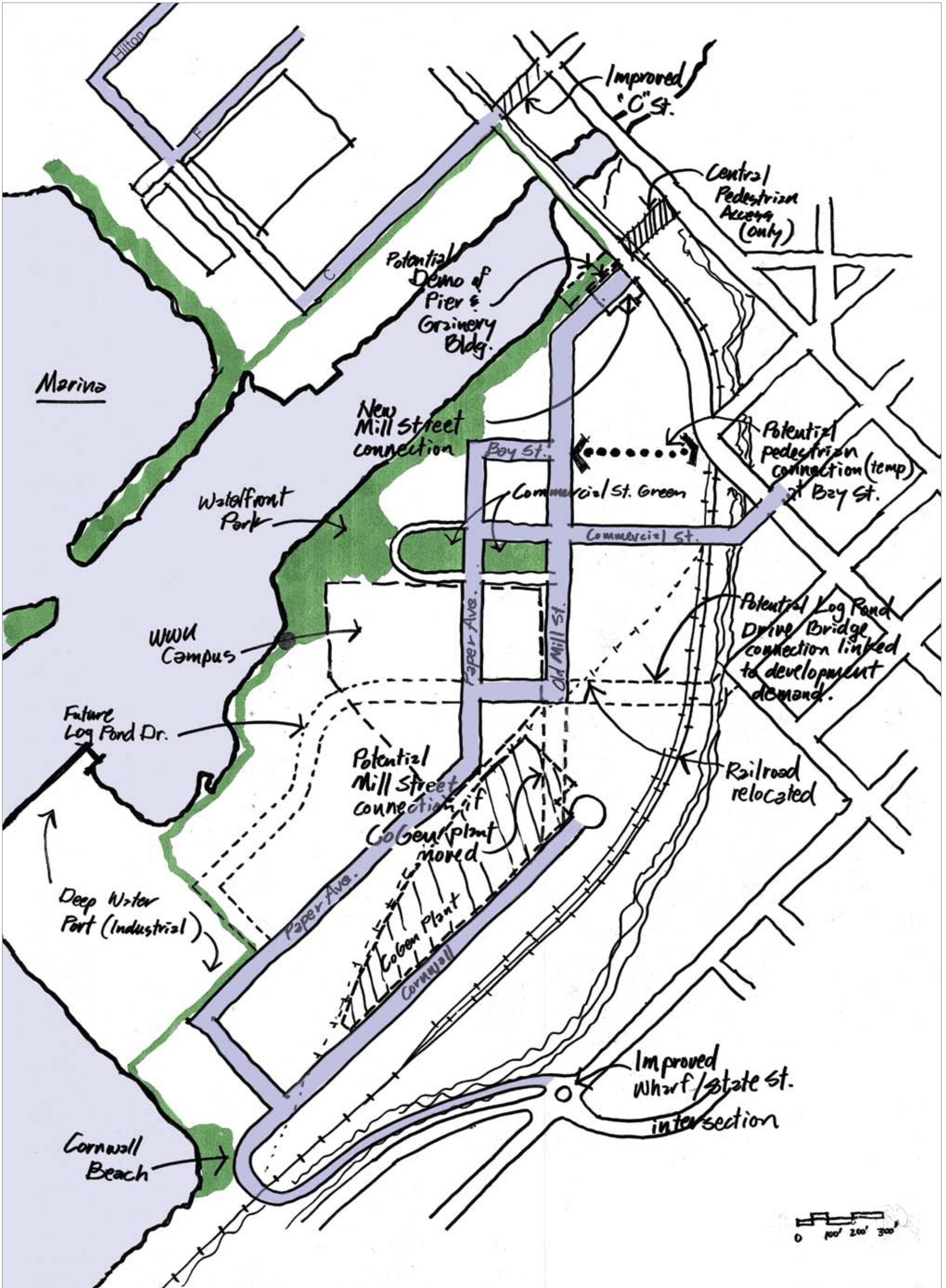


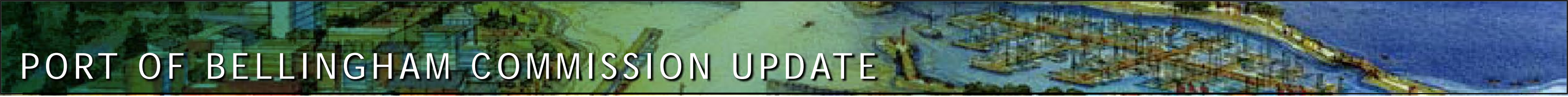
EARLY INFRASTRUCTURE SEQUENCING



PORT OF BELLINGHAM COMMISSION UPDATE

ROADWAY NETWORK PROPOSAL 2016





PORT OF BELLINGHAM COMMISSION UPDATE

SUSTAINABLE STRATEGIES

Stormwater

- Minimize amount of pollution generating surfaces (i.e. surface parking lots, wide traffic lanes, on-street parking, uncovered storage yards).
- Provide a stormwater system that enables separation of clean stormwater from polluted stormwater.
 - Dual stormwater piping system:**
 - Minimizes amount of stormwater requiring secondary treatment
 - Provides the option of future rainwater harvesting for grey and potable water uses.
- Reuse existing GP stormwater system with modifications on undeveloped areas during early phases of development.
- Potential for biofiltration of dirty stormwater through temporary bioswales on undeveloped portions of the site
- Use of biofiltration of dirty stormwater where possible to reduce the degree of secondary water treatment required.
- Use parks as part of the sustainable strategy.

Sewer Systems

- Potential use of grey and black water sewer treatment systems on site in order to maintain additional capacity for the general Bellingham sewer system (saves cost over expansion of the main sewer treatment facility).

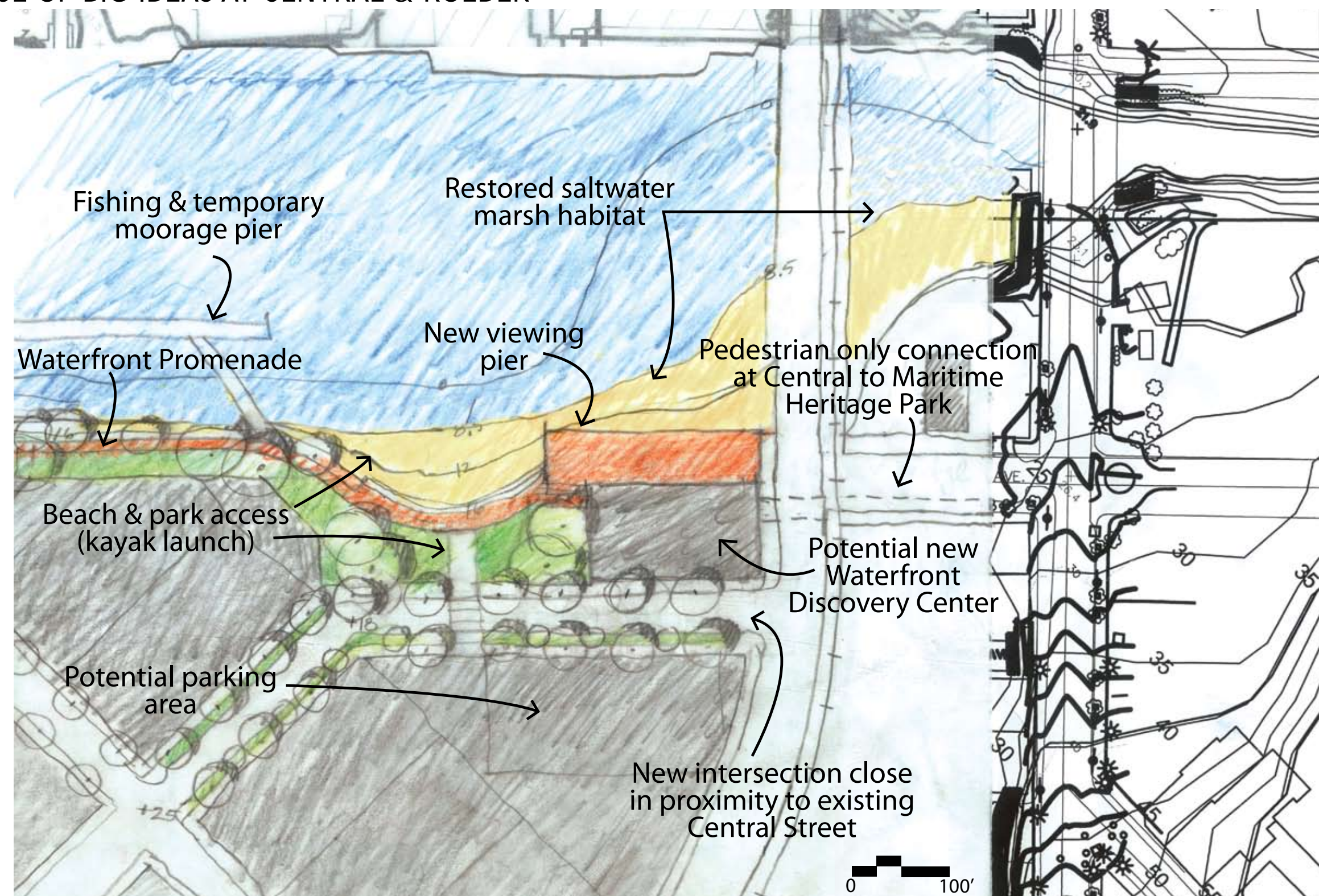
Energy Transfer

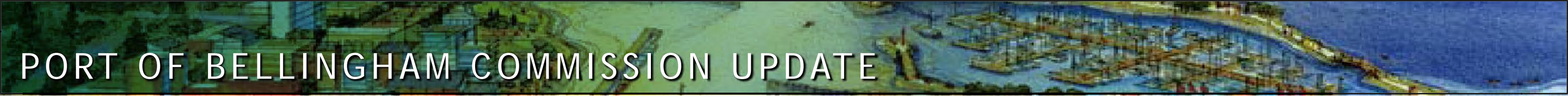
- Establish systems which harvest excess heat from office and university buildings for transfer to residential buildings in the same neighborhood.
- Potential for energy harvesting from grey and black water sewer systems at utility piping in right-of-way.



PORT OF BELLINGHAM COMMISSION UPDATE

CONVERGENCE OF BIG IDEAS AT CENTRAL & ROEDER





PORT OF BELLINGHAM COMMISSION UPDATE

SCHEDULE OF PROCESS

